

DRIVEN TO DELIVER.

VAN DAMME PLANT HIRE



Our service is DAMME good!

**For all your Earthmoving
& Haulage Needs**



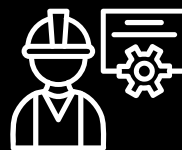
DRIVEN TO DELIVER.



**LOGISTICS &
TRANSPORT**



EARTHMOVING



**MINE/SITE
MAINTENANCE**



**HAULAGE
ON/OFFROAD**



➤ On experience we
develop, deliver and
are driven

Contents

04	INTRODUCTION	
	OUR VISION	4
	OUR COMMITMENT	4
	FAMILY OWNED	5
	OUR HISTORY	6
08	CAPABILITIES	
	MINE/SITE MAINTENANCE	8
	HAULAGE LOGISTICS	10
	EARTHMOVING	12
13	OUR FLEET	
14	THE WAY WE WORK	
	SAFETY	14
	QUALITY MANAGEMENT	15
	OUR ENVIRONMENT	17
	OUR PEOPLE	18
	OUR COMMUNITY	19



Our Vision

- > By constantly challenging ourselves, driving for continuous improvement - we become a leading provider within the haulage, civil and mining resource industries.



Our Commitment

> WE ARE DRIVEN TO DELIVER

We are committed to providing long-term consistent value to our clients, employees and our local communities by remaining innovative, ensuring efficiency, quality and integrity.

Van Damme Plant Hire will achieve and exceed client outcomes -

- By prioritising SAFETY of our people and environment
- Being ACCOUNTABLE ensuring client satisfaction and standards are adhered
- Ensuring FLEXIBILITY and RESPONSIVENESS
- Through continuous improvement and development

Family Owned

➤ Van Damme Plant Hire is a family-owned business founded in 2012 by brothers, Lucas and Daniel Van Damme who share a passion for all things earthmoving and trucks with a combined 30yrs of experience between them.

Strong growth throughout the years, due to our diverse scope of services, has led to expanding our localities, from our head office and workshop in Sarina, QLD to now servicing the Bowen Basin from our Dysart, QLD Division.



Our History

2012

VDPH Founded

Worked subcontracting excavator operations within the Mackay/Isaac Region.

2013

Water Cart Fleet

Peabody Energy Coppabella
2012-2015 Contracted for the operations of Dust Suppression.

2014

Mine Site Maintenance

Peabody Energy NGC
2014- Present Expanded into earthmoving equipment for the purpose of mine site maintenance

2015

Rehabilitation

Peabody Energy –
Codrilla Project closure/ Rehabilitation

2016

Dust Suppression

Turners Engineering - Caval Ridge Mine 2016-2018 - Provide dust suppression onsite.

2017

Sarina Range

Reconstruction of the Sarina Range, after Cyclone Debbie (2017/2018) carting road base material, working in cohesive partnership with **BMD Construction** and **GroMac Quarries**.

Wilmar Sugar

Wilmar Sugar 2017 – 2021
Transport of Liquid Fertiliser to Wilmar Clients

2018

DBCT

Dalrymple Bay Coal Terminal
2018 - Present – Supply site maintenance including: dust suppression, pad construction, road construction and repairs, coal screening, coal removal and clean-up.

Stockfeed

Cattle King - Transport of cattle supplements throughout QLD

2019

Quarry Haulage

2019 - Present
General Quarry Haulage
W.Walls & Sons Fine Sand

2020

Sojitz Mine

Sojitz Mine Supply water cartage / dust suppression onsite

Rehabilitation

Peabody Burton Mine
Mine site rehabilitation

2021

WASCO Australia

Wasco Australia Provide machinery and operators, and supply and cart gravel for a hard stand pad at Dyno Nobel Moranbah.

Coal Haulage

Vitrinite Coal 2021 - Present
Bulk Coal Haulage
Kalari - Coal Haulage and road maintenance onsite at **Stanmore Mine**

Shoalwater Bay

Contract to cart material to the army training facility

Adani

Transport material for railway extension

2022

Iron Ore/Gold

Western Australia - Carting Iron Ore and Gold with A,B Triples & Quads

Coal Haulage

Moorvale 2022 - Present
Bulk Coal Haulage
Rehabilitation

2023

Coal Haulage

Foxleigh Mine Bulk Coal Haulage





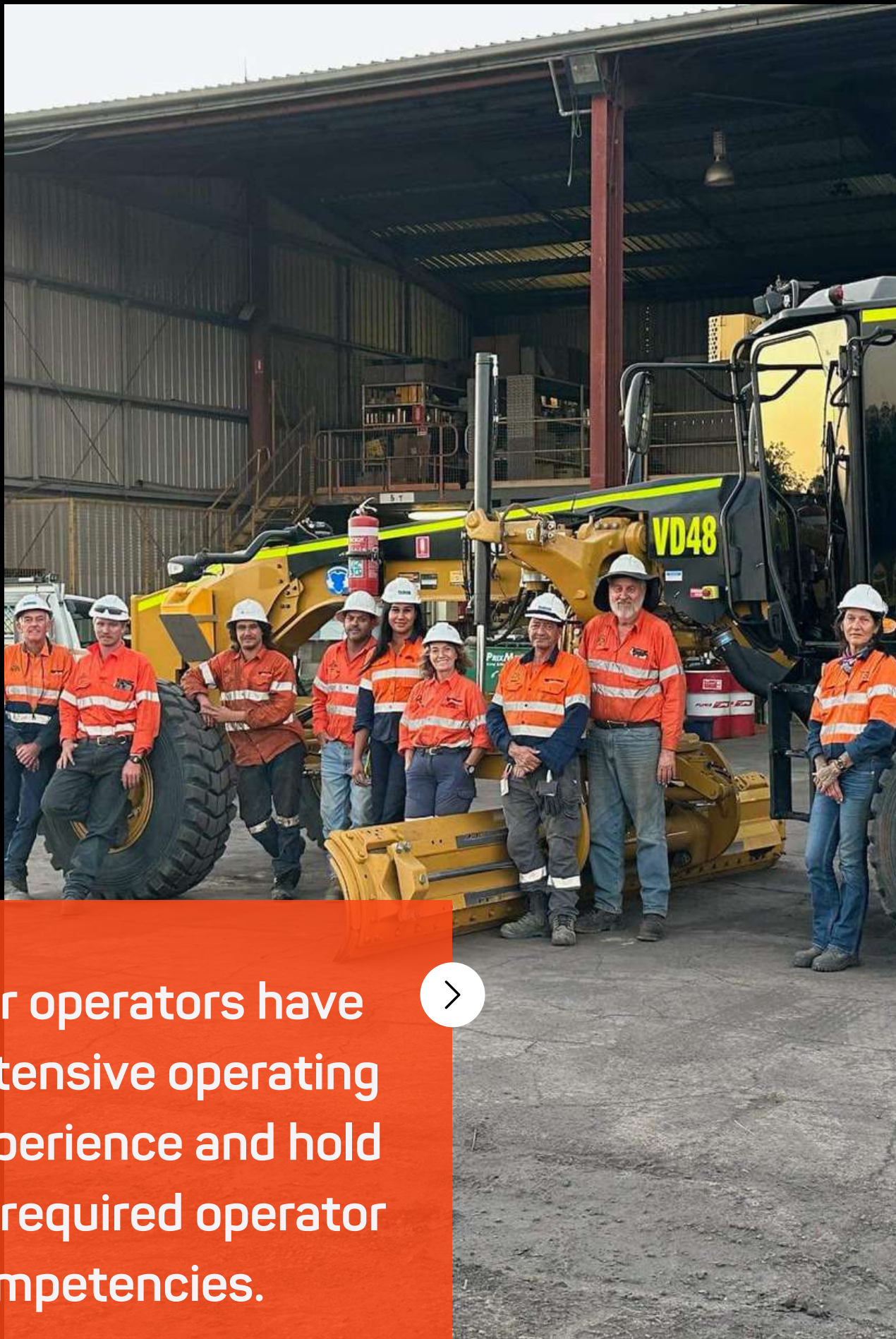
Mine/Site Maintenance

> WE OFFER TOTAL MINE MAINTENANCE SOLUTIONS.

Van Damme Plant Hire has built a strong and reliable reputation as a contractor of choice when it comes to mine and site maintenance. Our modern fleet of equipment, competent operators and safety-first work methods ensure us in providing a complete service.

Our services include, but are not limited to:

- Mine Rehabilitation
- Earthworks
- Access Road Construction - LV/HV
- Dust Suppression - Bulk Water Haulage
- Waste Management
- Infrastructure construction/maintenance
- Coal/Reject Haulage
- Quarry works
- Weed Suppression
- Drilling preparation
- Drainage



Our operators have extensive operating experience and hold all required operator competencies.





Haulage Logistics

> **VAN DAMME PLANT HIRE BOASTS A SIGNIFICANT FLEET OF TRANSPORT EQUIPMENT, PROVIDING HAULAGE LOGISTICS AND HANDLING SOLUTIONS FOR YOUR ON AND OFF-ROAD NEEDS.**

Haulage services include:

- Coal Haulage
- Bulk Haulage
- Heavy Haulage
- Rural Supplies
- Dangerous Goods
- Freight
- Scrap Metal
- Quarry Materials
- Non-potable water

Handling solutions include:

- Excavators
- Front End Loaders

With our modern fleet we have the ability to offer our clients haulage solutions - short and long term in varying workloads/configurations:

- Coal Haulage/Quarry Materials
 - Side Tipper - Single and multi-trailer combinations
 - Side Tipper - Off Road Bogie drive, Tri drive and Bigfoot combinations
- Bulk/Heavy Haulage/Rural Supplies
 - Trailer - Tri axle drop deck, Quad floats and Dolly combinations
- Scrap Metal
 - Semi-end Tipper
- Non-potable Water
 - Body Water Trucks
 - Trailers Single 33,000L/66,000L / Double 66,000L
- Dangerous Goods/Freight/Rural Supplies
 - 6T Body truck/ Mega Tilt Tri axle

Our entire transport fleet is NHVAS Accredited, equipped with MTData and fatigue systems.





Earthmoving



> MINING, CIVIL AND RURAL

Van Damme Plant Hire has a diverse fleet of heavy equipment, offering earthmoving solutions to the mining, civil and rural industries.

With a proven track record, excellence in delivery, competence and safety driven workforce we deliver. We continue to invest, diversifying our services with fit for purpose equipment enhancing our capabilities.

Areas of specialty include, but are not limited to:

- Mine Rehabilitation/Earthworks
- Rural and Agricultural Earthworks
- Dust Suppression - Bulk Water Haulage
- Civil Construction

OUR FLEET



ARTICULATED DUMP TRUCKS
40-45 Tonne



EXCAVATORS
30-40 Tonne
Long Reach 36 Tonne



DOZERS
CAT D6, D8, D10, D11



FRONT END LOADERS
CAT 966, 980, 988, 992



GRADERS
140M, 160M, 16H



ROLLERS/COMPACTORS
10-20 Tonne



SKID-STEER LOADER



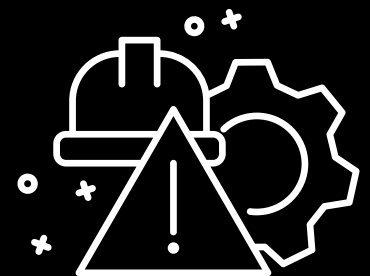
Safety

> SAFETY IS EVERYONE'S RESPONSIBILITY - AN ONGOING COMMITMENT

Van Damme Plant Hire is committed to providing a safe workplace consistent with legislative framework and industry standards. Ensuring safety is upheld and respected with the utmost value and never compromised, our aim is to achieve Zero harm to ourselves and those of whom we interact with on a daily basis, the general public, environment, property, plant and equipment.

We exercise management strategies which include:

- Safety Management
- Environmental Management
- Traffic Management
- Risk Management



Safety is an ongoing commitment in which we actively encourage our employees to be involved, ensuring the continued improvement of our company's WHS. Just as important is the health and wellbeing of our people.



Quality



Management

➤ QUALITY = CONTINUITY

Van Damme Plant Hire implement quality management systems to ensure our services are reliable and consistent, exceeding client satisfaction.

To achieve this objective, we will ensure that we:

- **Respect and comply with quality commitments by** producing and supplying services that conform to relevant specifications and meet customer requirements
- **Focus on our clients** by ensuring that our services meet or go beyond their needs
- **Achieve operational excellence** through the expansion, implementation and continual improvement of effective management systems incorporating quality, environmental, health and safety activities.
- **Seek relevant certification** of our management systems, to ensure they are pertinent and contribute to the efficient and reliable operation of the company
- **Integrate quality objectives into our business plans** by ensuring that the company includes quality objectives in our business plans
- **Hold employees accountable for** maintaining the quality of work in their area and carrying out their duties

Quality Management is conducted in accordance with:

- ISO 45001:2018 Occupational Health & Safety Management Systems
- ISO 9001:2015 Quality Management Systems
- ISO 14001:2015 Environmental Management Systems
- NHVAS - Accreditation Number: NHVAS44958
 - Mass Management
 - Maintenance Management
- MT Data Systems
- Gaudian - Fatigue Systems

Risk Management Procedures are practiced and assist in identification and management of potential hazards. A dedicated Compliance Manager ensures compliancy.



Van Damme Plant Hire FOCUS on clients by ensuring service delivery is quality.

Our Environment

> WE BELIEVE THAT A SUCCESSFUL FUTURE FOR OUR BUSINESS DEPENDS ON THE SUSTAINABILITY OF THE ENVIRONMENT IN WHICH WE OPERATE.

As a business, Van Damme Plant Hire, recognise we have an impact on the environment, both directly from our operations and indirectly. We seek to manage our environmental impact and to protect the environment in which we operate.

VDPH operates under strict EHS practices, meeting all requirements of the relevant legislation and the following certifications:

- ISO 14001:2015 Environmental Management Systems
- ISO 45001:2018 Occupational Health & Safety Management Systems
- ISO 9001:2015 Quality Management Systems

While we agree that there can be many ways to comply with the above standards, VDPH has prepared policies and procedures which must be complied with in order to maintain conformance and retain certification. All personnel are therefore required to learn about and follow all the instructions regarding EHS.



Our People

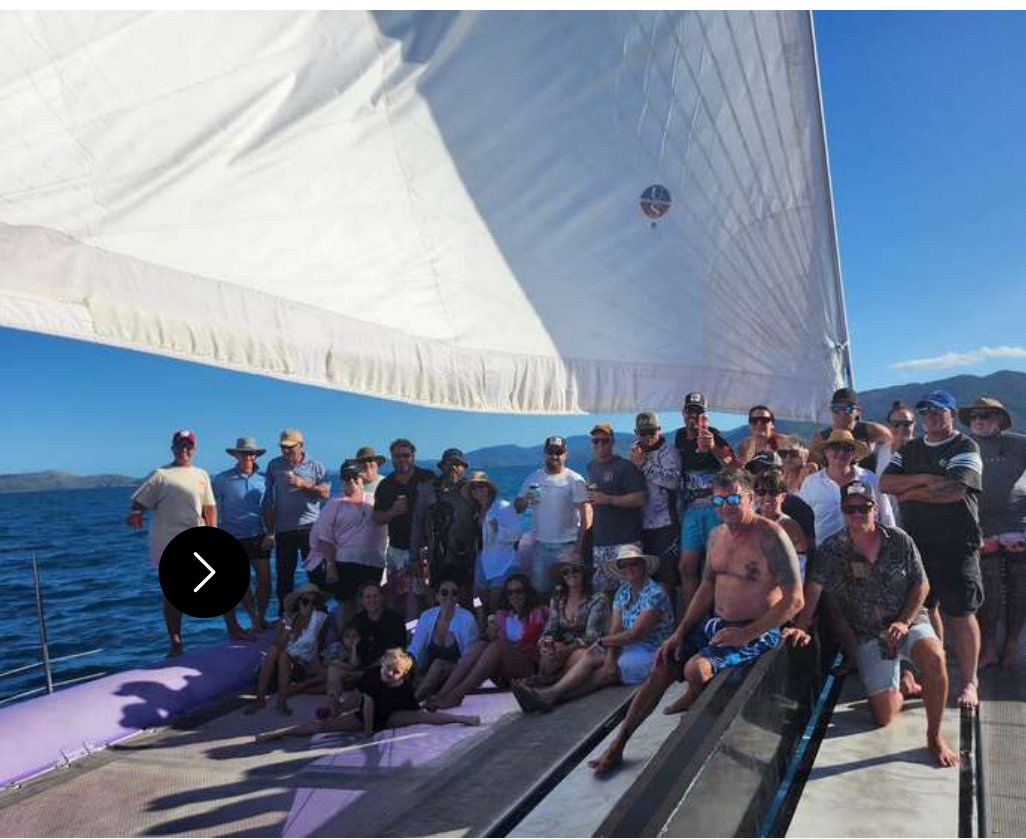


➤ **OUR WORKFORCE IS THE CORE OF OUR OPERATIONS - OUR MOST VALUABLE ASSET.**

Van Damme Plant Hire acknowledges that our dedicated and skilled workforce are critical to our longevity, expanding capabilities and ability to deliver successful projects whilst maintaining safe operations. Led by an approachable, experienced, hands-on management team who lays a strong focus on teamwork and collaboration to achieve our objectives.

All employees are required to conduct themselves at work and undertake work in accordance with VDPH policies and procedures and standards of conduct. In addition, all employees are expected to follow these guidelines and standards diligently when performing work in both individual and team-based operations.

Behaviour and conduct, as well as execution of work tasks, form part of the performance requirements of the job. Communication both internally and externally is encouraged and in recognising feedback, we ensure constant improvements and a positive ethos.



Our Community

> COMMITMENT TO COMMUNITY

As a local business Van Damme Plant Hire recognises and understands the importance in developing respective relationships within communities in which we conduct our operations.

We aim to maintain community relations:

- Complying with legislation, policies and procedures as set out by the workplace in accordance with community relations
- Recognise values of differing cultures and heritage
- Maintaining accurate records as per workplace requirements as well as conducting regular operation audits
- Regular communications and discussions with contract management
- Addressing any community complaints within an immediate timeframe

We are very proud of the relationships we have built within the community and continue to contribute and offer support in a variety of ways:

- Recruitment/Employment
- Local charity support
- Community, schools and sporting groups
- Community Festivals/Events
- Buy Local - Support Local Industries and businesses





Van Damme Plant Hire Pty Ltd

165 Marlborough Sarina Road, Sarina QLD 4737 | PO Box 688, Sarina Q 4737
Lot 3, Dysart By-Pass Rd, Dysart QLD 4745



07 4956 2214



admin@vandammeph.com.au



www.vandammeph.com.au

